

# VENTILATION GRILLE | WEATHER PROTECTION GRILLE CSS (= CENTRIFUGAL SEDIMENT SEPARATOR)

MF 5-3 STAGE | MF 5-2 STAGE

As of: 02/2024



## UNIVERSAL APPLICATION RANGE:

It can be used as an air inlet and air outlet grille in side walls, in the underfloor area and in the roof area.

## THE PRIMARY ADVANTAGES OF OUR VENTILATION GRILLES ARE:

- High separation efficiency against rainwater, wiping water, coarse dust and sand, including at high inflow velocities
- Low required energy and space due to low pressure loss
- Low maintenance and long service life owing to special coating processes
- Very low weight achieved through the use of thin-walled aluminium profiles
- Very flexible in design and dimensions
- Specific adaptations also possible on the basis of our experience for specific applications (additional wire mesh, dust filter and snow filter; IPx4 or IPx5 version, foldable versions...)

## DESCRIPTION:

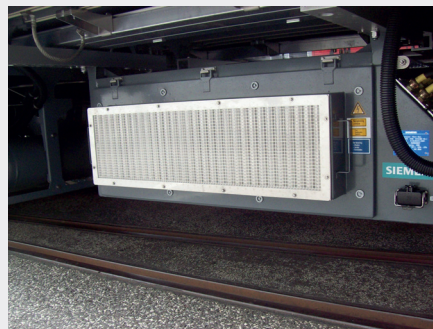
Every ventilation grille or weather protection grille supplied by Krapf & Lex is tailored to the customer's requirements. In doing so, we provide you with support from the start of the project in the design and construction of the optimal solution for you. We supply all leading manufacturers in Europe (for references, see [www.krapf-lex.de](http://www.krapf-lex.de)) and enjoy global

presence with over 800,000 ventilation grilles in use in railway vehicles.

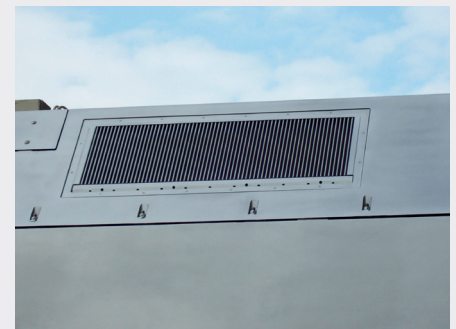
Should the space available not favour the use of the Mf 5-3 stage (3 filter stages), the Mf 5-2 stage (2 filter stages) can be used with a slightly reduced filter efficiency.



**INTAKE GRILLE IN SIDE  
WALL**



**OUTLET GRILLE IN THE  
UNDERFLOOR AREA**



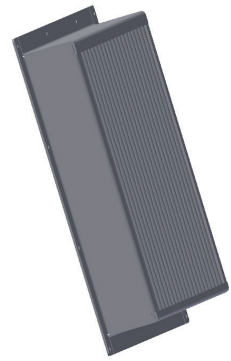
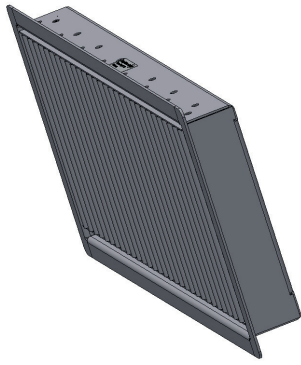
**AIR INTAKE GRILLE IN  
THE ROOF AREA**

Krapf & Lex Nachf. Verkehrstechnik GmbH & Co. KG

📍 Stresemannstr. 13, 92637 Weiden

🌐 [www.krapf-lex.de](http://www.krapf-lex.de)

**KRAPF & LEX**



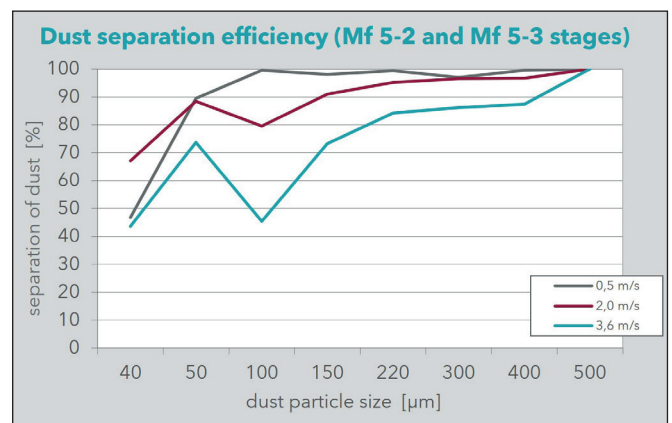
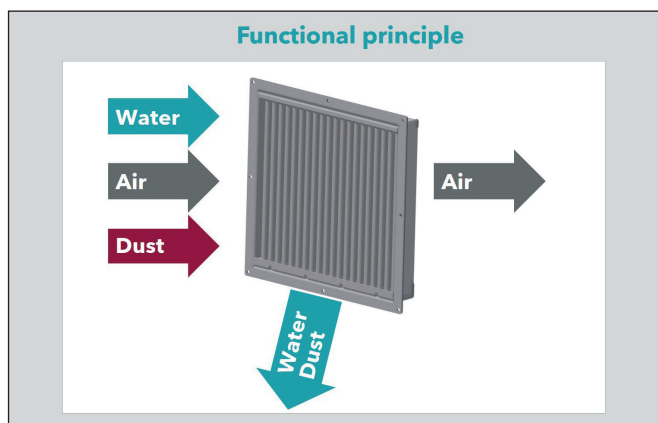
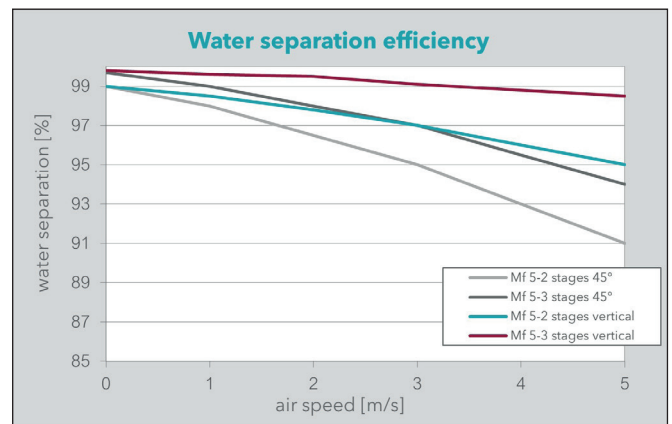
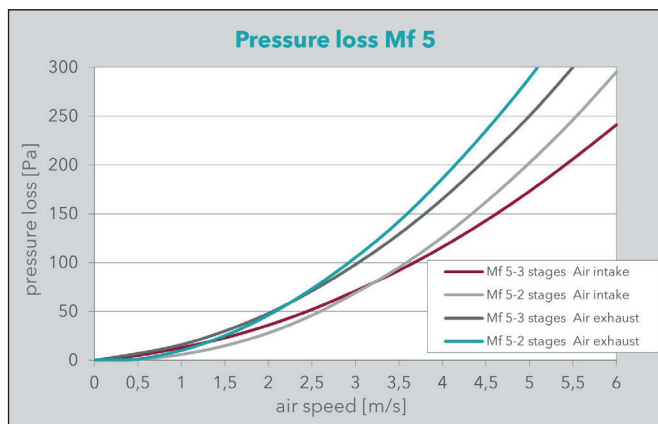
High water separation with low installation depth:  
Mf 5-3: 74 mm  
Mf 5-2: 59 mm

The identical design of the Mf 5-3 and Mf 5-2 guarantees a uniform appearance.

Also available in the 'ventilation grille flange-mounted from the outside' version

## TECHNICAL DATA:

### PRESSURE LOSS / WATER SEPARATION / COARSE DUST, SAND



Automatic and rapid preparation of quotes, design, construction and work preparation are all possible on an individual basis using our configurator at: <http://krapf-lex.online/>

